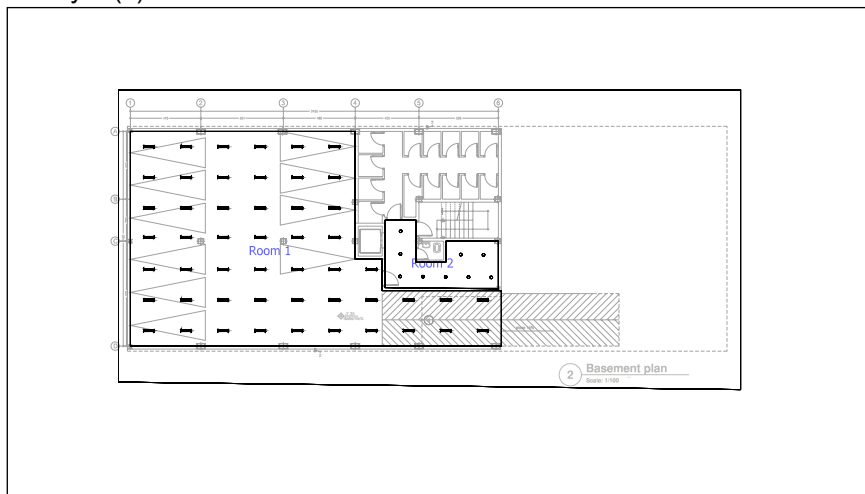


BASEMENT LIGHTING

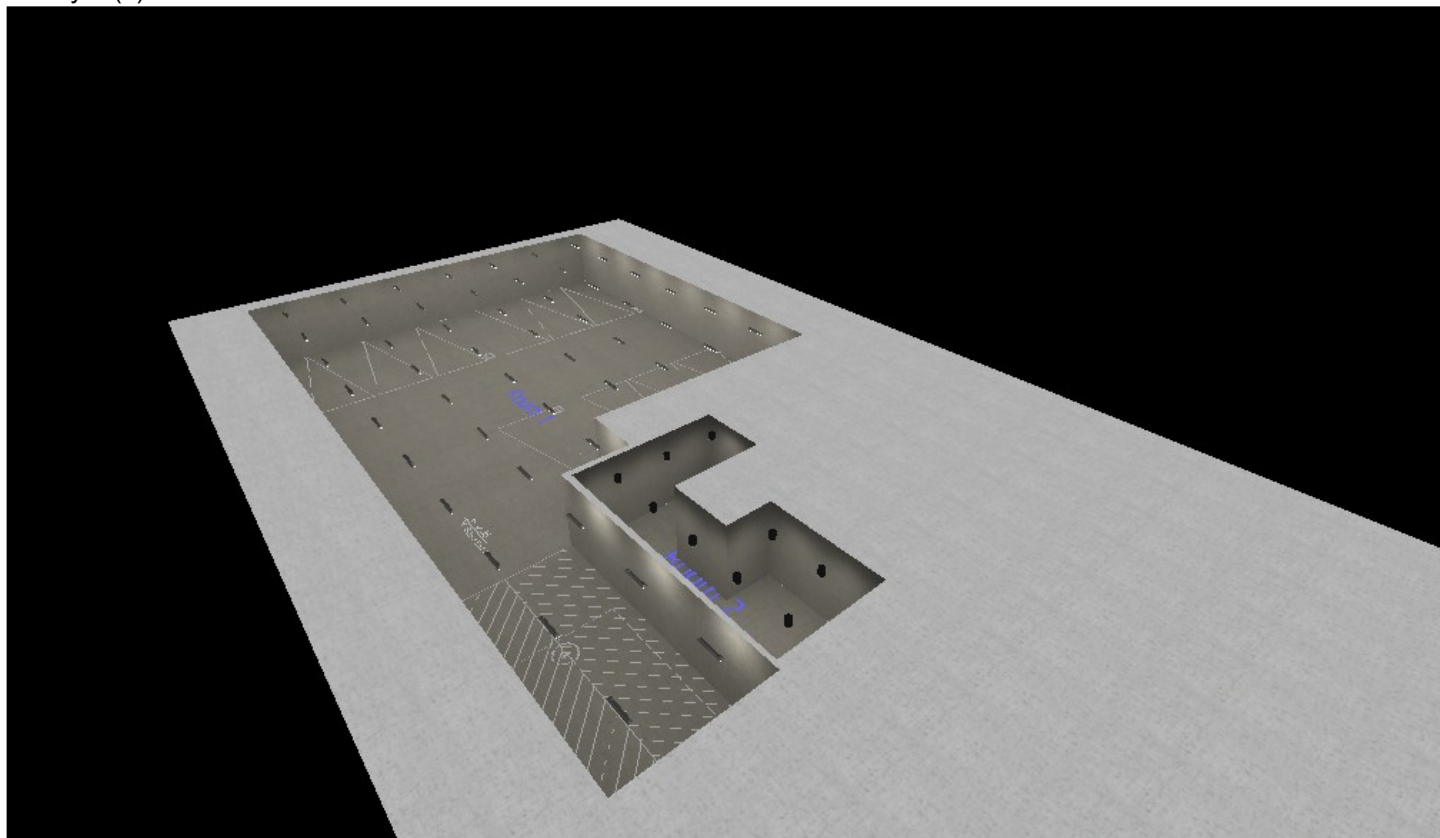
BASEMENT LIGHTING / Views

Storey 1 (2)

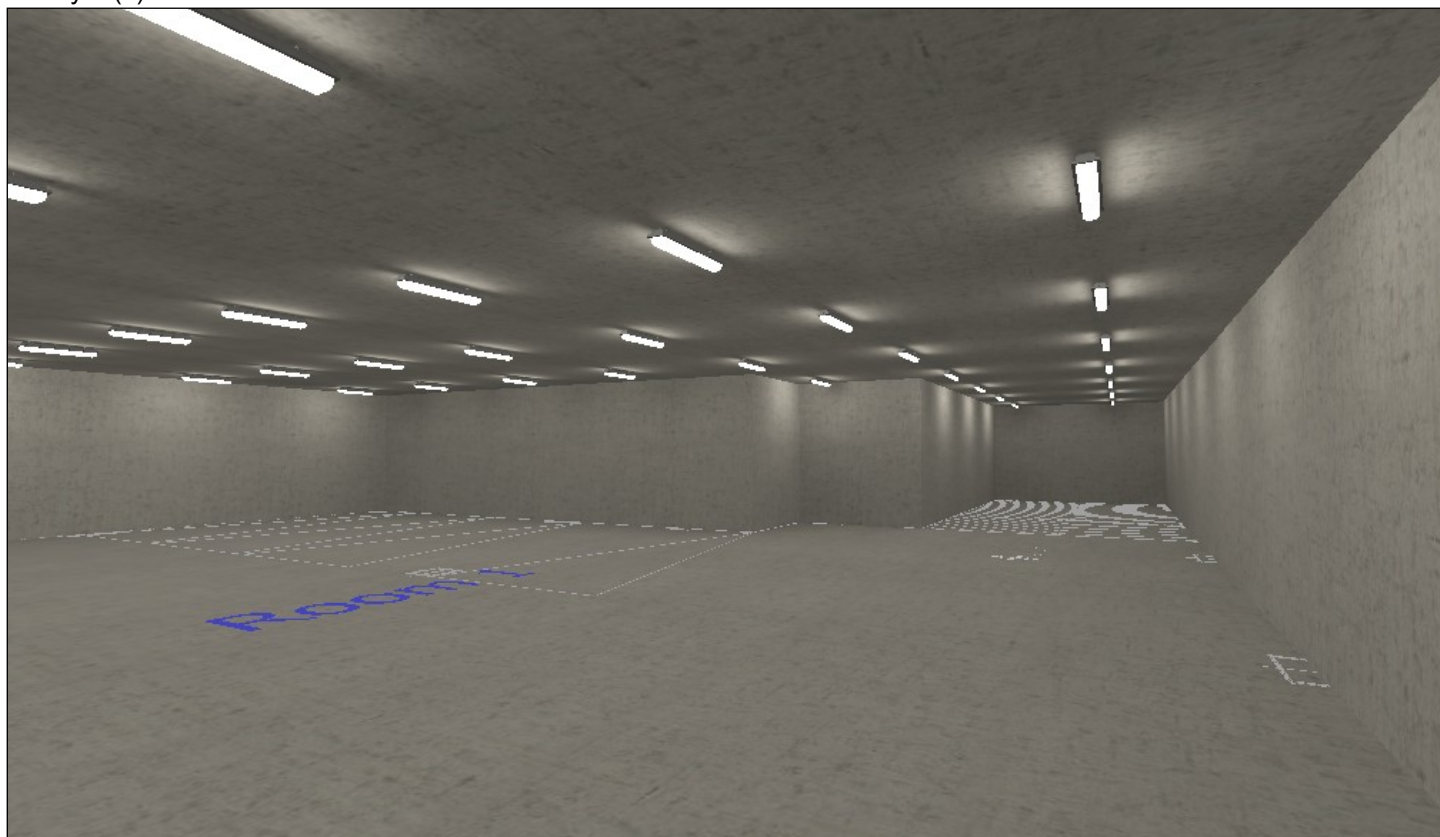


Scale: 1 : 500

Storey 1 (3)



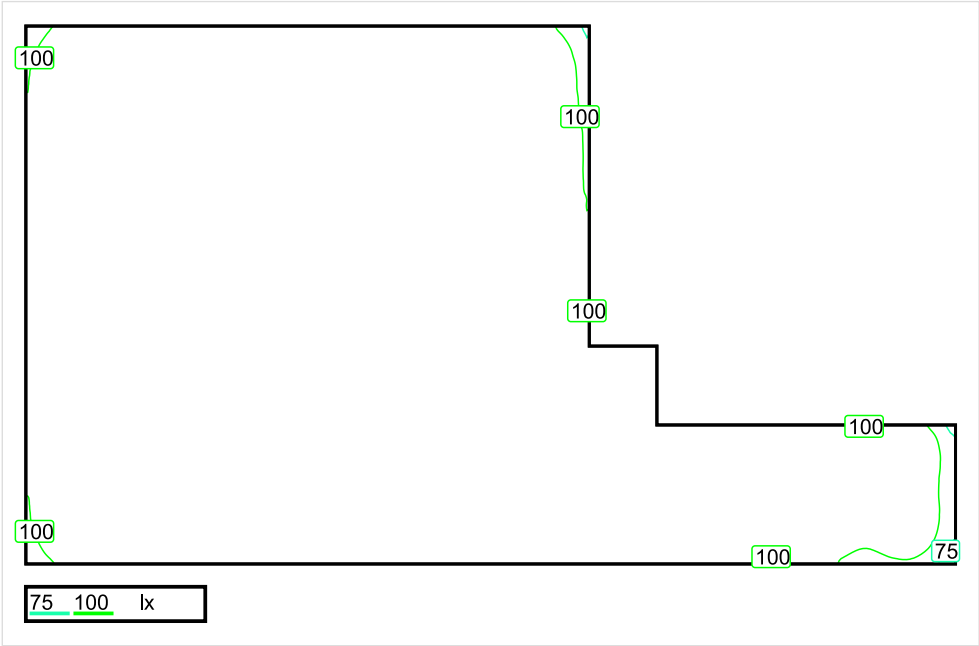
Storey 1 (4)



Storey 1 (5)



Room 1 / Room summary



Scale: 1 : 200

Perpendicular illuminance (adaptive)

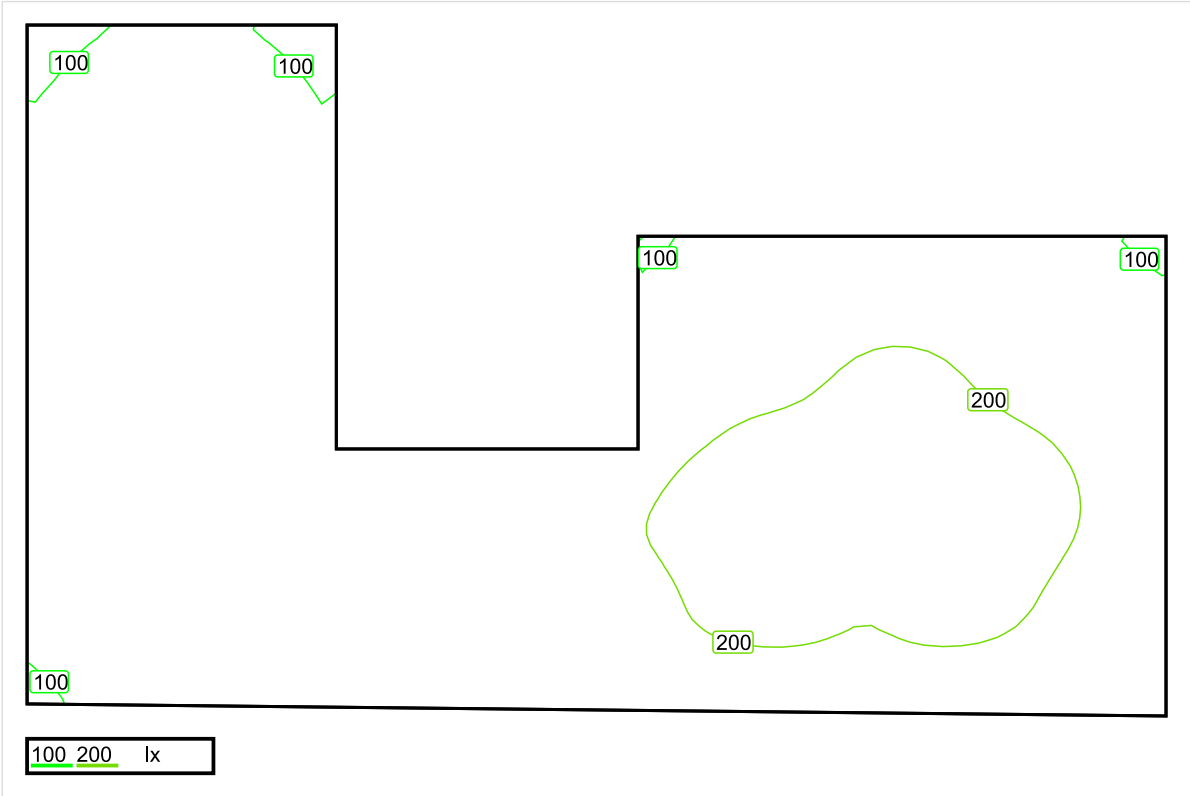
| Name | Average [lx] | Min [lx] | Max [lx] | Min/average | Min/max | Points (Relevant) |
|-------------|--------------|----------|----------|-------------|---------|-------------------|
| Workplane 1 | 151 | 63 | 194 | 0.417 | 0.325 | 256 x 256 (47068) |

Height of room: 2.400 m, Height of working plane: 0.800 m, Wall zone: 0.000 m, Reflection factors: Ceiling 42/9%, Walls 42/9%, Floor 42/9%, Maintenance factor: 0/67

| No. | Quantity | | |
|-----|----------|--|--|
| 1 | 51 | MAZINOOR M451124PC 1x24W SEALUX Dust & Moisture Proof Fl. Luminaire with GRP Body and PC Diffuser Light output ratio: 78.71% Luminous flux: 1377 lm, Power: 26.0 W |   |

Total luminous flux: 70252 lm, Total Load: 1326 W
Specific connection value: $5.21 \text{ W/m}^2 = 3.45 \text{ W/m}^2/100 \text{ lx}$ (Ground area 254.65 m²)

Room 2 / Room summary



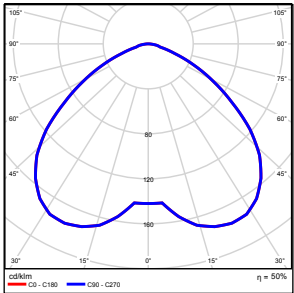
Scale: 1 : 50

Perpendicular illuminance (adaptive)

| Name | Average [lx] | Min [lx] | Max [lx] | Min/average | Min/max | Points (Relevant) |
|-------------|--------------|----------|----------|-------------|---------|-------------------|
| Workplane 2 | 169 | 81 | 238 | 0.479 | 0.340 | 64 x 64 (2849) |

Height of room: 2.400 m, Height of working plane: 0.800 m, Wall zone: 0.000 m, Reflection factors: Ceiling 42/9%, Walls 42/9%, Floor 42/9%, Maintenance factor: 0/80

| No. | Quantity | |
|-----|----------|---|
| 1 | 9 | MAZINOOR M584G6CFE 25 W Spiral Self Ballasted DIANA downlight with symmetrical Plain Anodized aluminium reflector Light output ratio: 49.86% Luminous flux: 798 lm, Power: 25.0 W |



Total luminous flux: 7180 lm, Total Load: 225 W
Specific connection value: $9.47 \text{ W/m}^2 = 5.60 \text{ W/m}^2/100 \text{ lx}$ (Ground area 23.76 m²)